



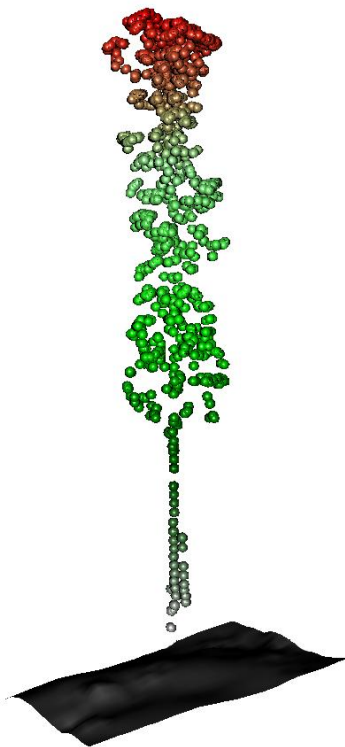
## CRC for Forestry

### **LiDAR in Forests 2010** *The 2<sup>nd</sup> Australian Airborne Laser Scanning in Forestry Workshop*

Presenting recent advances in LiDAR data acquisition and processing for forest applications

State and regional reporting of Australian LiDAR in forestry activities

Research planning for airborne laser scanning in Australian forest management



#### **Open forum**

**When:** Tuesday 20<sup>th</sup> April 2010

**Times:** 9:00 – 5:30 Workshop  
7.00 – 11.00 Workshop dinner

**Where:** University of Tasmania, Hobart

**Cost:** \$220 excl. workshop dinner  
\$290 incl. workshop dinner

#### **CRC members' workshop**

**When:** Wednesday 21st April 2010

**Times:** 9:00 – 4.00

**Where:** University of Tasmania, Hobart

**Cost:** No cost

**For more information and to download a registration form:**

- <http://www.utas.edu.au/spatial/lidar-workshop>

**Enquiries, contact:**

- [lidar@crcforestry.com.au](mailto:lidar@crcforestry.com.au)
- Or phone Jenny Newton on (03) 6226 1948